

# Home Energy

PROS



Embrace Luxury & Sustainability In Every Corner Of Your Home.





Conserve Energy, Save Money, Protect The Environment.



## Our Mission

Home Energy Pros mission is to empower homeowners by taking control of home energy. Through innovative and advanced energy-efficient products, we provide affordable, sustainable choices, giving homeowners the power to shape their living environment for a brighter future.





# Would You Like To?



Cut your heating & cooling bills immediately?



Save wear and tear on your heating & cooling equipment?



Help eliminate hot and cold spots within your home?



Create a more comfortable indoor living area?



Increase the value of your home?



Become less dependent on foreign energy?



Helping to preserve the environment?





# Do You

Go into shock when you  
receive your Utility bill?



# The Problem



## Let's take a look at the numbers :

- In January of **2000**, the national average utility cost was **8 cents** per kilowatt hour.
- As of December **2023**, the national average utility cost was **19 cents** per kilowatt hour.
- That means that the average cost of electricity has risen over **138%** since **2000**!



**138%**

2000 - 2023



# What These Numbers Mean **To You!**

Year 1	Year Total : \$ 1200	Year Total : \$ 1800	Year Total : \$ 2400	Year Total : \$ 3600
	Monthly Bill : \$ 100	Monthly Bill : \$ 150	Monthly Bill : \$ 200	Monthly Bill : \$ 300
Year 3	Year Total : \$ 3870	Year Total : \$ 5805	Year Total : \$ 7740	Year Total : \$ 11610
	Monthly Bill : \$ 115	Monthly Bill : \$ 173	Monthly Bill : \$ 230	Monthly Bill : \$ 346
Year 5	Year Total : \$ 6946	Year Total : \$ 10419	Year Total : \$ 13892	Year Total : \$ 20837
	Monthly Bill : \$ 133	Monthly Bill : \$ 199	Monthly Bill : \$ 265	Monthly Bill : \$ 398
Year 10	Year Total : \$ 16836	Year Total : \$ 25255	Year Total : \$ 33673	Year Total : \$ 50509
	Monthly Bill : \$ 189	Monthly Bill : \$ 283	Monthly Bill : \$ 378	Monthly Bill : \$ 567

\* These numbers based on an annual rate increase of 7.25%



According to the Department of Energy Information Administration (EIA) skyrocketing energy costs have increased approximately 19% just in 2022.

These outages are attributed to outdated electrical grid infrastructure, weather events, and fuel supply shortages.

According to the Department of Energy, energy costs are expected to increase 26-54% nationally in the next 24 months.

According to the US Department of Energy, our outdated infrastructure has left us vulnerable to outside cyber attacks.

Large sustained outages, have occurred with increased frequency in the US. Over the past 2 decades, Americans have seen the number of sustained power outages, increase by 80%.

The use of fossil fuels will continue to have a negative impact on our environment. Not only are they a finite resource, but by burning fossil fuels to create energy, we are emitting harmful gases that cause air pollution and climate change. Fossil fuel production requires significant water resources and causes water pollution.

## Why Solar?





# Home Energy Pros Solar

The time is now to stop renting electricity from your utility provider. Put solar panels on your house and make your own clean power to get short-term and long-term financial benefits while helping to protect the environment. Your home may qualify for solar at no money down!



We can install rooftop solar panels on shingle, metal, tile, and flat roofs.



We also offer **ground-mounted solar energy systems**, solar patios, and solar carports.



We use top tier solar technology with every installation.



Operating in Ohio for over 12 years!



✓ Solar battery backup power systems

✓ Home Generators



## Why Choose Us?



The ability to reduce or eliminate your electricity bill. Many of our Home Energy Pros Solar customers completely eliminate their electricity costs. In some cases, create a surplus of energy, that they are able to sell back to the energy provider.



Customers may qualify for the Solar Investment Tax Credit (SITC) and can receive up to a 30% Federal Tax Credit.



Protect your family from the rising cost of utility bills. Build immunity to increases.



Safety and security. Having a Home Energy Pro Solar Panel System installed on your home, can protect your family from sustained power outages.



Increased property value of approximately 7-8% nationally.

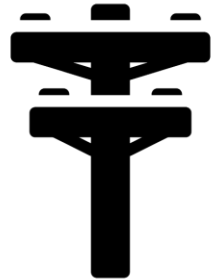
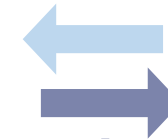
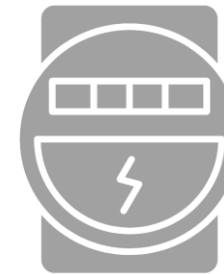
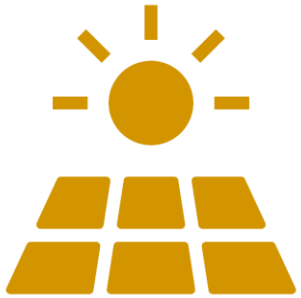


Our installation services include the Complete Warranty. Our top tier panels are designed in America and built to last, with an unbeatable 25-year warranty covering 100% of parts and labour.



# How Net Metering Works

Solar panels convert energy from the sun into electricity.



The energy is used in your home, school or business.

A bi-directional meter measures Energy used and excess energy produced.

An inverter converts the electricity produced by the solar panels from direct current (DC) to alternating current (AC) for use in your home, school or business.

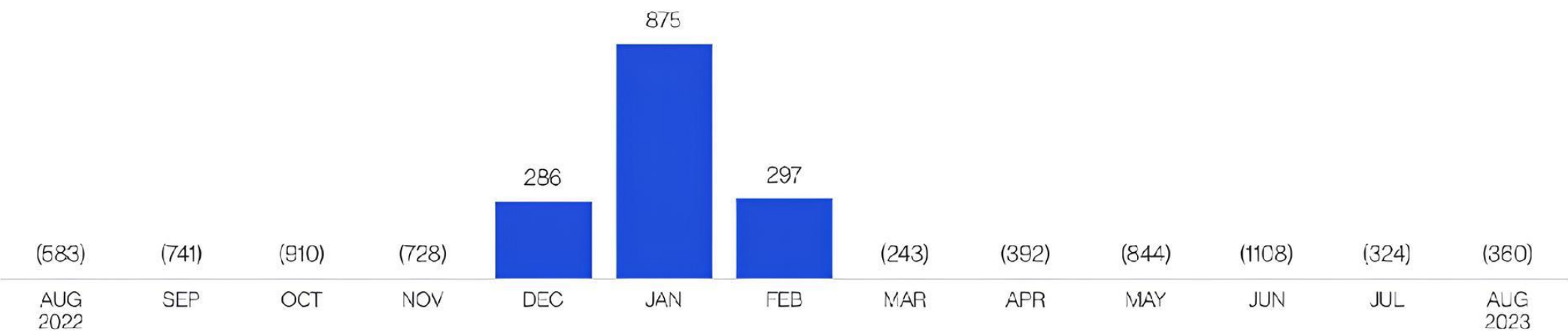
Energy used in your home from the electrical grid.

Excess energy from your solar panels not used in your home goes back to the electrical grid.



**Photovoltaic Solar Example**

# Historical Usage



Historical average usage: -368 kWh Historical usage: -4,415 kWh

## Usage Detail

[Print Usage Details](#) | [PDF](#) [CSV](#)

Billing From	Billing To	Billing Days	Service Type	kWh Delivered	kWh Received	Net kWh
07/17/2023	08/17/2023	31	Electric	666	1,016	(360)
06/16/2023	07/17/2023	31	Electric	645	969	(324)
05/17/2023	06/16/2023	30	Electric	366	1,474	(1,108)

# The Many Ways, We Can **Help You!**



Tri-Guard Multi-Layered Insulation



Solar Panel Systems



Eco Probiotic Systems





# The Many Ways, We Can Help You!



Solar Ventilation System



Crystallo Water Filtration Systems

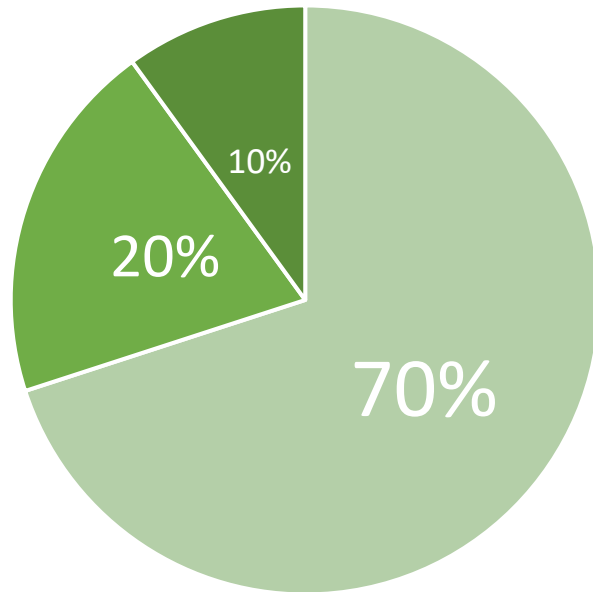


Tri-Guard Thermal Paint



# Where Is The **Money** Going?

Nearly 70% of utility bills goes towards our HEATING AND COOLING!



■ Heating & Cooling ■ Appliances & Lighting ■ Hot Water Heater



U.S. DEPARTMENT OF  
**ENERGY**

Office of  
Science

Your average utility bill can be broken into 3 main categories :





# Heat Transfer

4. Convection causes warm air to rise and the heat is lost.



3. Heat is conducted through the ceiling to the attic air.

2. Heat is conducted from the warm air to the ceiling.

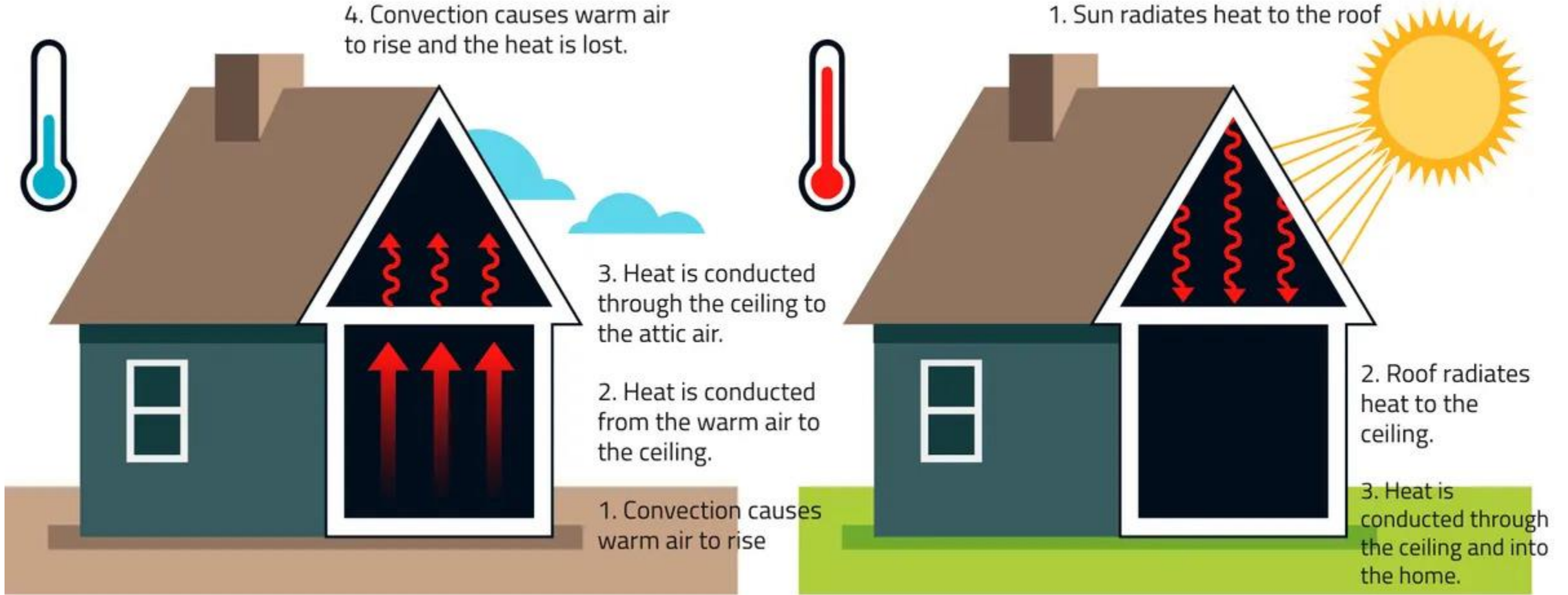
1. Convection causes warm air to rise

1. Sun radiates heat to the roof



2. Roof radiates heat to the ceiling.

3. Heat is conducted through the ceiling and into the home.







## 3 Ways Heat Is Transferred



Conduction

Heat transferred by touch.



Convection

Heat transferred by air, liquid, or gas.



Radiation

Needs no medium.  
MOST DIRECT TYPE!



# Where is the Heat Transferred?



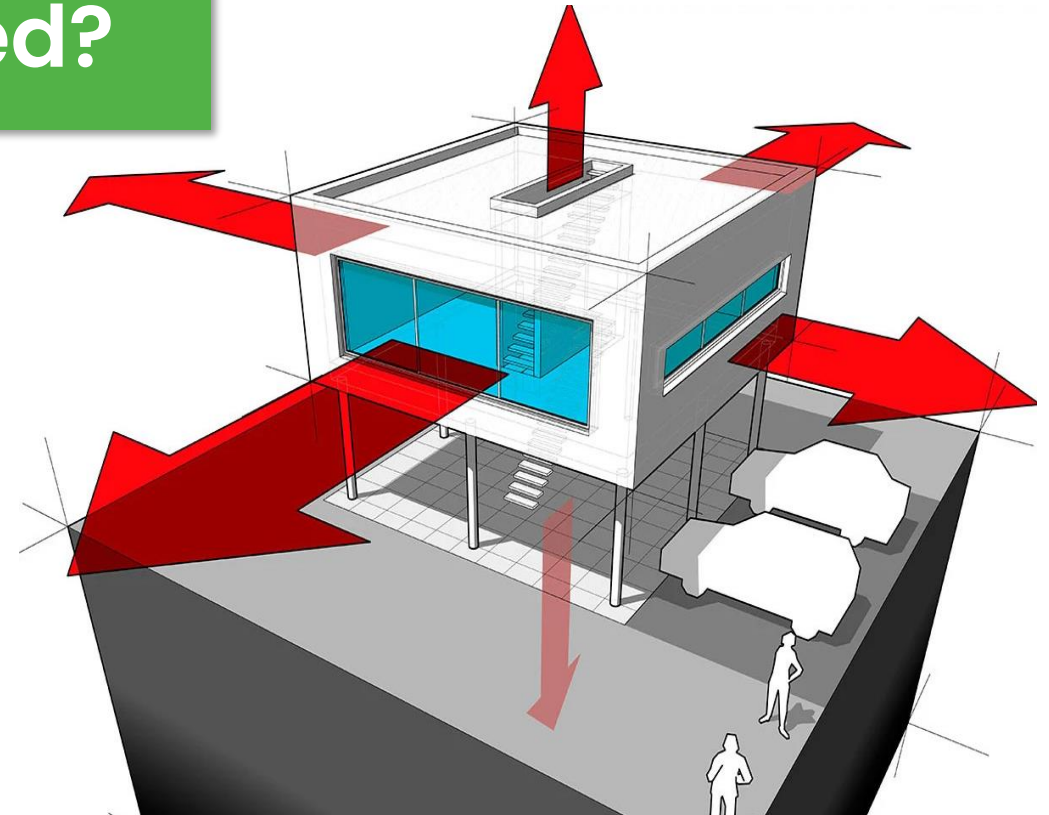
**Walls**  
5-10%



**Windows & Doors**  
25-30%



**Roof**  
60-70%



U.S. DEPARTMENT OF  
**ENERGY**

Office of  
Science

According to the



## How Can We Help With Heat Transfer?

While some companies try to fit you into a “One Size Fits All” solution, at Quality Eco-Technologies, we recognize that each and every home is *unique and different*. Because each home is unique, each home has different efficiency issues that need to be addressed.

While all our products are designed to make your home more *Comfortable, Healthy, and Energy-Efficient*, 2 of our products were designed specifically to directly stop the affects of heat transfer :

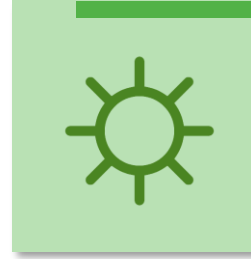




# REMEMBER

Between 60-70% of the heat gain and heat loss in your home is taking place through your roof and attic.

Traditional Insulation stops only 10% of Radiant transfer.



In the summer, your roof is soaking up the radiant heat from the sun, and then transferring that heat into your attic. From there, there is only ONE THING stopping all of that heat from entering into your home... your INSULATION!



In the winter, the EXACT OPPOSITE is taking place! As you heat your home, the hot air does not just stay inside your home! Because warm air rises, the heat that you are paying for ends up rising to your ceilings with only ONE THING to stop it from leaving your home...your INSULATION!



U.S. DEPARTMENT OF  
**ENERGY**

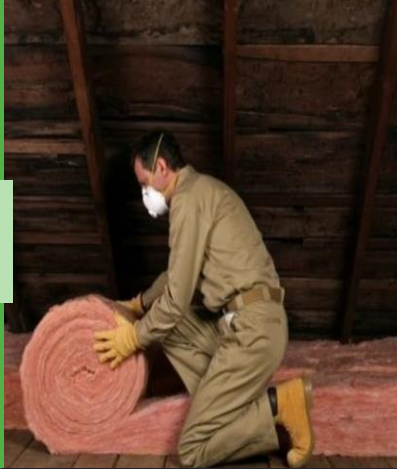
Office of  
Science

- Source



# Traditional **Insulation**

Batt  
Fiberglass



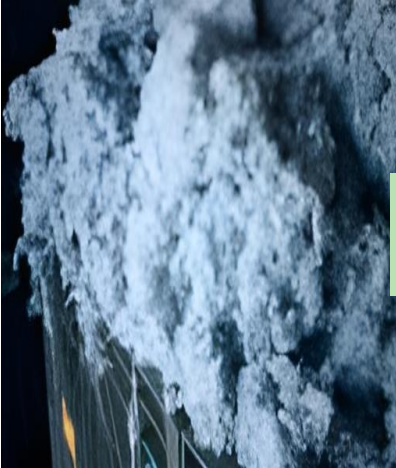
Blown-in  
Cellulose



Blown-in  
Fiberglass



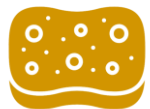
Blue  
Jeans



Foam  
Insulation



Rockwool



Works Like a Sponge!

Traditional Insulation just **SLOWS** down Heat Transfer.

It **DOESN'T STOP** Heat Transfer!



# More on Traditional **Insulation**

All Traditional Insulation has something called an **R-Value**.

The “R” stands for **RESISTANCE!**

The R-value of insulation tells you how well and how long the insulation will resist the heat transfer before it becomes saturated and stops resisting the heat transfer.

## R-Value Depletion:

One of the biggest issues with traditional insulation is that the R-value does not stay the same. Over time, the insulation and subsequently, the R-value breaks down due to several factors that cause the insulation to resist even LESS heat transfer!



Age



Compression



Condensation



# This Leads to a Serious Problem!

IT COSTS YOU MONEY... EVERY DAY!!

Higher cooling bills in the summer because heat radiates/transfers through the attic and into the house.



Higher heating bills in the winter because hot air rises and escapes into the attic.







# Solution?

## Multi Layer Reflective Insulation

This type of technology was originally developed by NASA to protect astronauts and equipment from extreme heat and cold in outer space.





# Multi-Layered Insulation

The outer layers are 99% pure Aluminium and reflect the Heat back to its source!

The core layer is a closed-cell polyethylene foam that gives added protection. This layer doesn't just stop the hot and cold transfer; it also serves as a thermal barrier, stopping condensation build-up and mold issues.



This layer separates us from all of the competition.



Our "MLI" solves the moisture and mold issues that other products create!



## The Power of Aluminum

73 firefighters, trapped in a Butte, MT forest fire, were saved by using radiant fire shelters; aluminized tents used to reflect extreme heat.

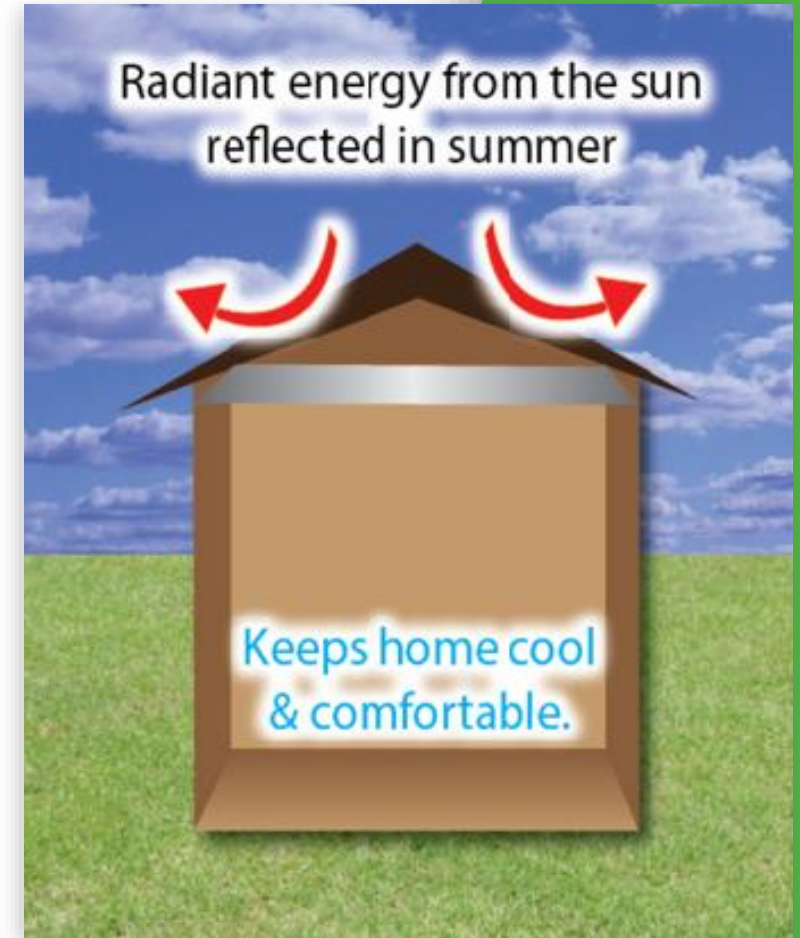
The men survived an hour and a half under the tents and were able to WITHSTAND 3 firestorms and heat that raised to 1,200 degrees.

- June 2012



# How Does It Work In The Warmer Months?

- The sun radiates heat into the attic causing EXTREME temperatures.
- Multi-layered Insulation blocks radiant heat from entering your home.
- Multi-layered Insulation STOPS up to 97% of Radiant Heat Transfer!



INCREASE  
Save Money!  
DRASTICALLY!

COMFORT





## How Does It Work In The Colder Months?

Warm air rises through the ceiling to the attic.

Multi-layered Insulation helps block warm air from escaping into the attic.

Multi-layered Insulation stops up to 97% of Radiant Heat Transfer!



**DRASTICALLY IMPROVE COMFORT!**

**Save Money!**





# What the Experts Are **Saying...**



In addition to traditional insulation, Multi-Layer Reflective Insulation saves energy both in the summer and winter by re-directing radiant energy in your home.

Multi-Layer Insulation can help your home become Energy Star approved, adding value to your home.

At least 25% and up to 50% in energy savings can be realized immediately depending on the climate, building configuration, family size, and lifestyle.

When reflective insulation is placed on the attic floor, much of the heat radiated from the hot roof is reflected back towards the roof, thereby reducing the amount of heat that moves through the insulation into the rooms below the ceiling.



Traditional Insulation







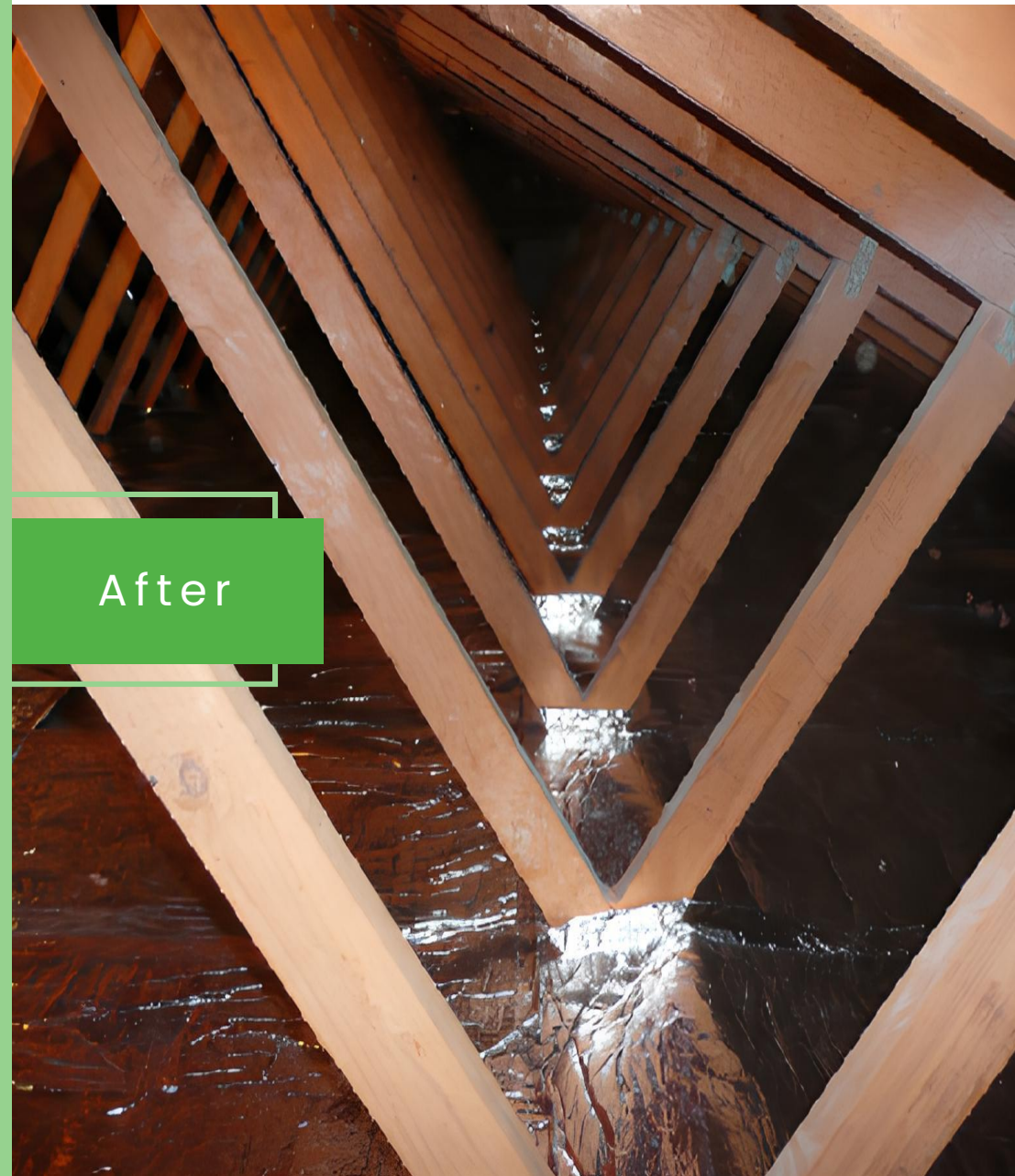
Multi-Layered Insulation







Before



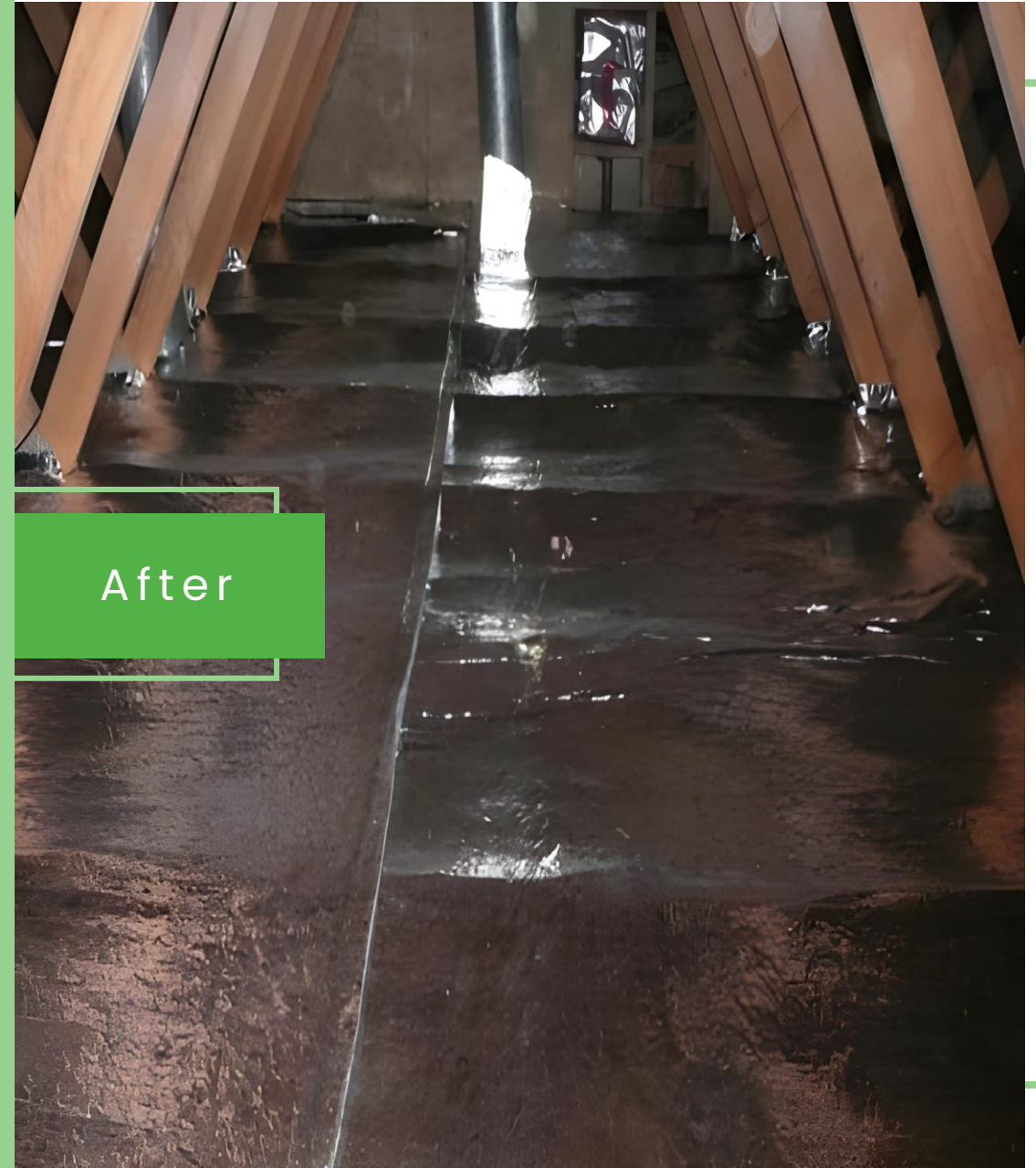
After







Before



After



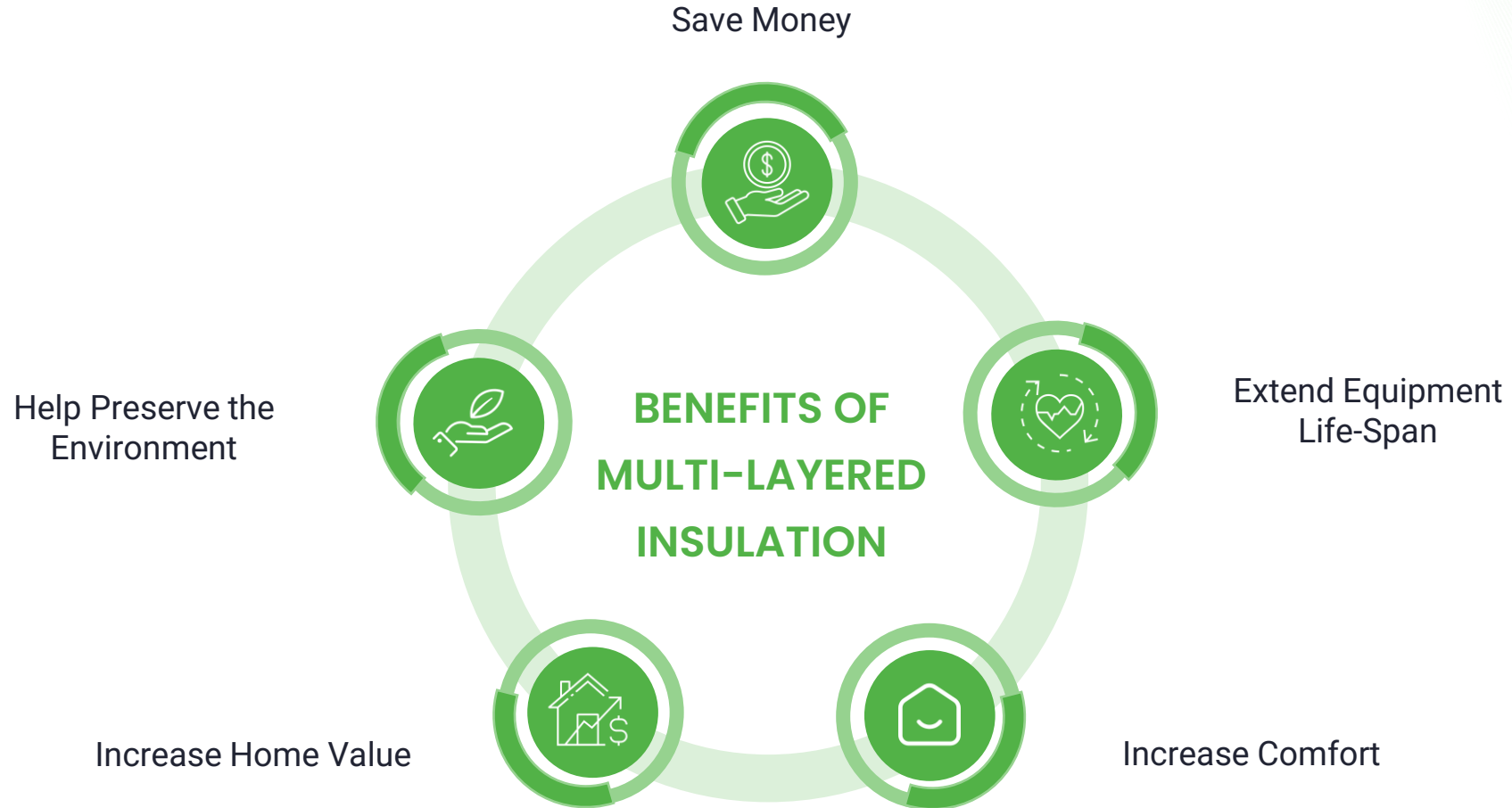




# What If I Use My Attic For Storage?








# WHAT CAN “MLI” DO FOR YOU?





# THERMAL PAINT

-  Same technology used to coat NASA space shuttles
-  Made with “micro-spheres” of aluminium & ceramics
-  Insulate places that could never be insulated before
-  Can be applied to ANY surface
-  For interior & exterior use



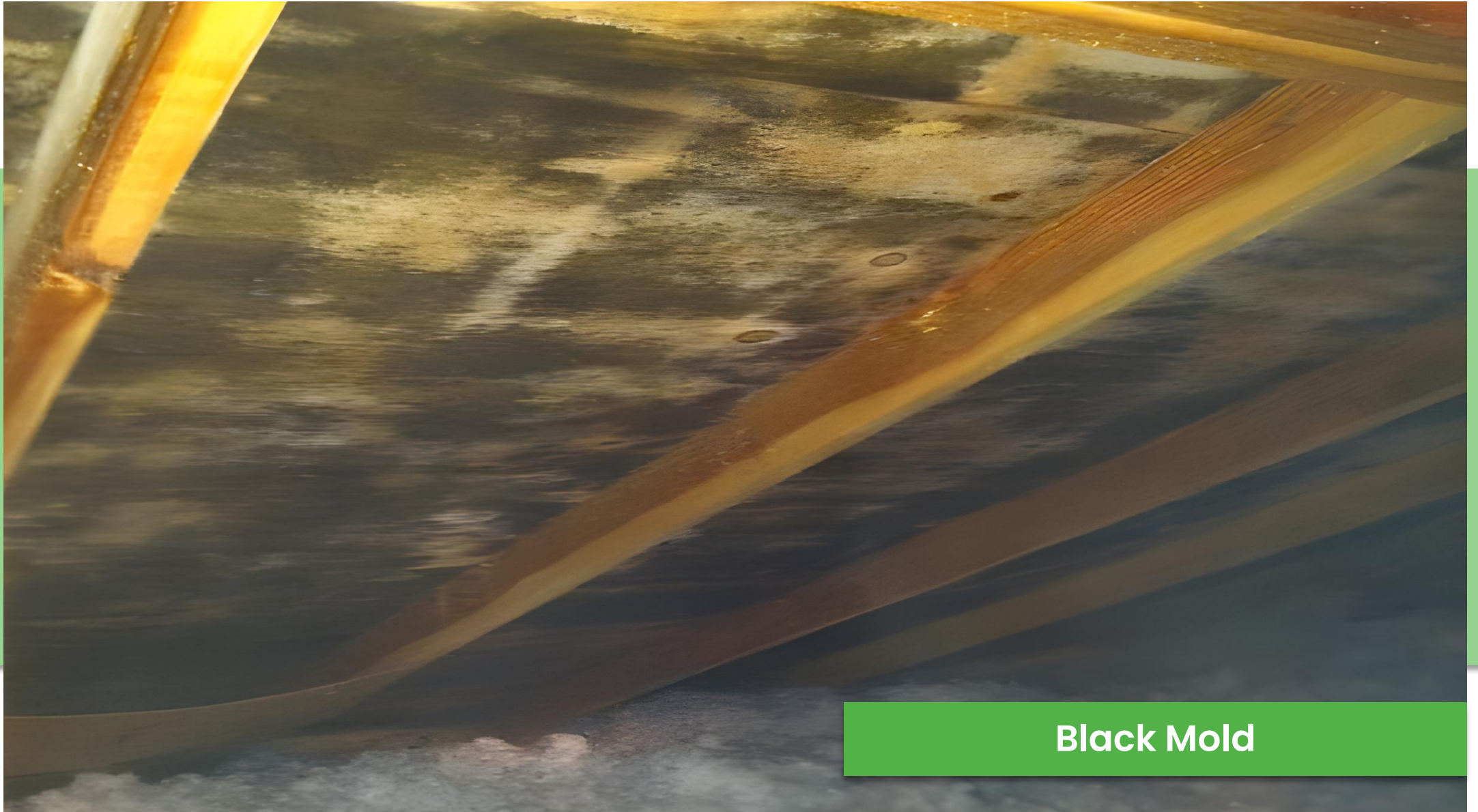
# Here Is What Some Of Our Customers **Are Saying...**

“ After the fan and MLI was put in our home it made a huge difference. We noticed an immediate drop in our utility bills! The savings and comfort makes it worth every penny. Everyone at Home Energy Pros was very professional, they sure lived up to their name.  
– Hellen S. ”

“ Our upstairs and downstairs used to be completely different temperatures, but when we installed the Multi Layer Insulation the temperatures evened out almost immediately!  
– Ryan W. ”

“ After installing the “MLI” in our attic, our bill for the winter dropped over 30% compared to the previous winter. The install was clean, quick and friendly. We highly recommend this company.  
– Dennis & Karla Jackson ”

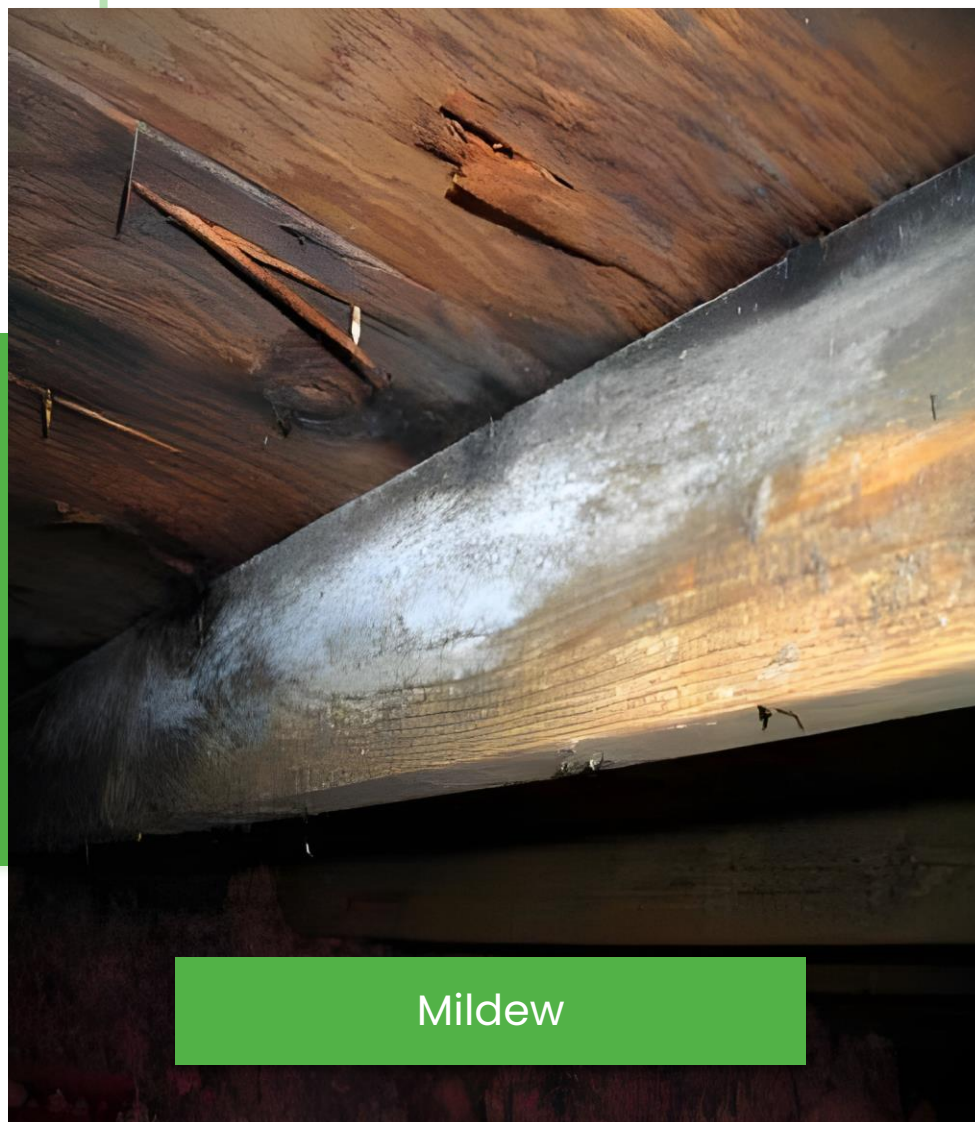
“ We had a mold and moisture problem in our attic. After installing the “MLI” and the Solar Fan our problems were completely solved, saving our home! Even better than that, our power bill was cut.  
– Danny & Mary Harless ”



**Black Mold**







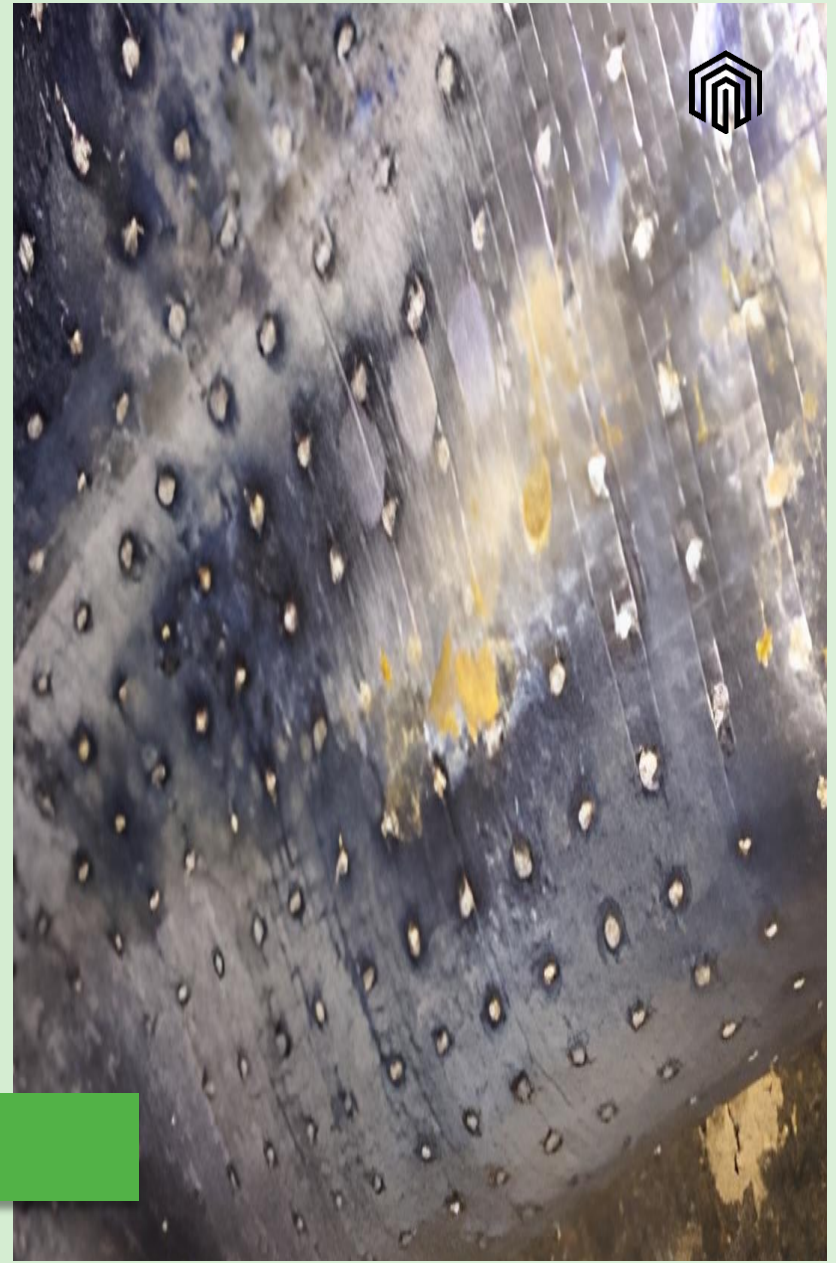
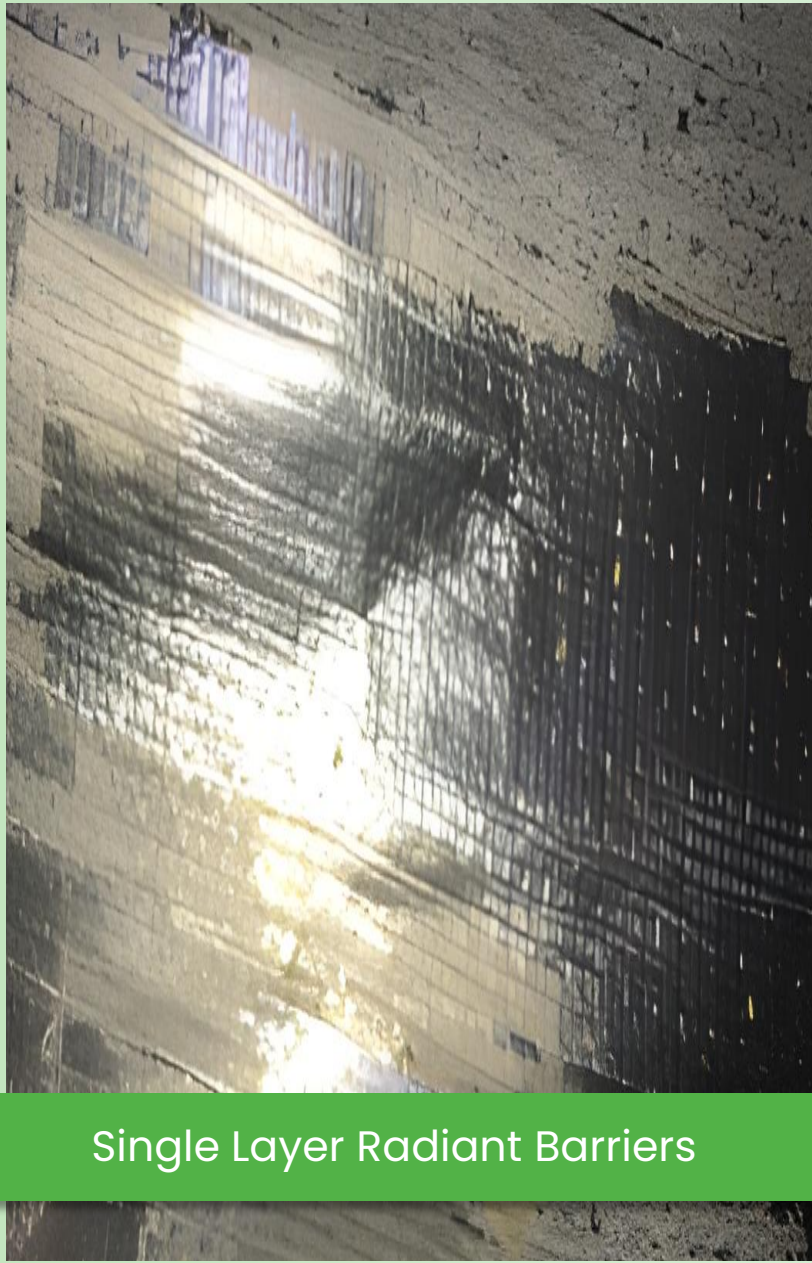
Mildew



Exhaust ducts  
not up to building code







Single Layer Radiant Barriers





# The Solution To Mold Problems

Over 50% of U.S. homes and 85% of commercial buildings have water damage and mold.



## CAUSES



HUMIDITY



TEMPERATURE



MOISTURE



POOR VENTILATION

Removes the Mold & the Stains!

Speed up 45x!

Kills Mold Spores In Minutes!

*Eco* MOLD  
— SOLUTIONS —

  
Quality Eco Technologies







- Aerodynamic engineering
- Free to operate
- 30% Federal tax credit
- No plastic parts
- Outperforms other products on the market
- ONLY "TRUE" LIFETIME WARRANTY
- Fireproof
- Extends shingle life
- Removes heat & moisture





# Whole Home Inspection

Receive your no-obligation home inspection at **ZERO COST!**

- ✓ Home Structure
- ✓ Thermal Imaging Device
- ✓ Roof
- ✓ Ventilation / Exhaust
- ✓ Crawlspace / Basement
- ✓ Mold / Mildew
- ✓ Windows / Doors / Sunrooms
- ✓ Solar Compatibility Inspection
- ✓ Insulation-Type / R-Value
- ✓ Examine Duct Work







# Every HomeSmart Solar Package

Includes

---

Vivint Essential  
Smart Home  
Security Systems  
Package valued at  
**\$1,500**

---

---

**3 years** active  
monitoring  
provided

---

---

No cost solar-  
compatibility  
inspection  
and professional  
installation

---

---

**100%** price match  
guarantee

---

---

**25-year** parts &  
labor service  
warranty

---

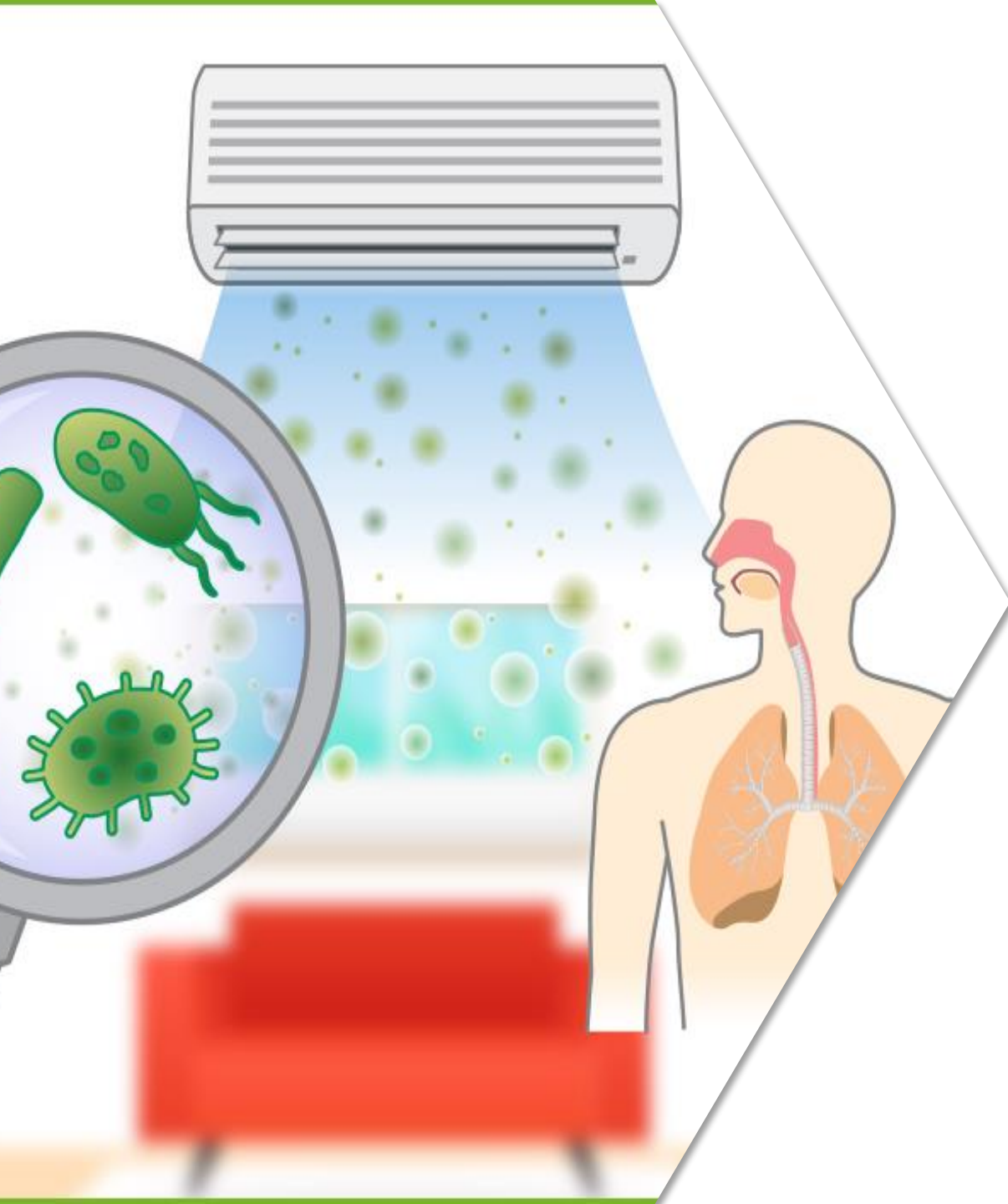


## Indoor Air Pollution

- Indoor air pollutant levels may be up to 100X higher than outdoor levels.
- Americans spend 90% of their time indoors.

Indoor air pollution is now the DEADLIEST Environmental Global Risk.

(EPA: Environmental Protection Agency)





## In The U.S. There Are ...



People Who Suffer From Asthema.



Americans Suffer From Nasal Allergies.



Cats & Dogs are Owned in the US.



Hospitals Acquired Infections are Contracted Yearly.







# Types Of Bacteria



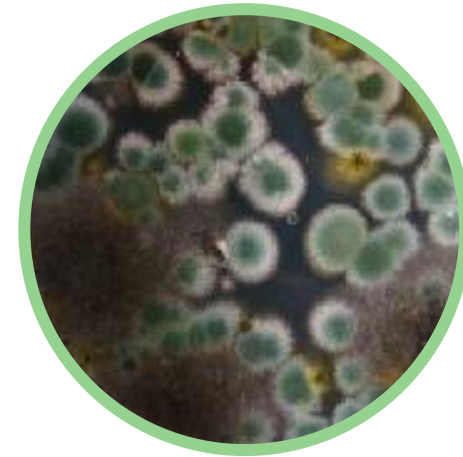
## The GOOD

Bio-Zone Probiotics



## The BAD

Infectious Bacteria



## The UGLY

Mold, Mildew, and Fungi



## GOOD BACTERIA

- \$20 billion & in over 500 food, drinks, & supplements.
- A majority of our immune system relies on probiotics.





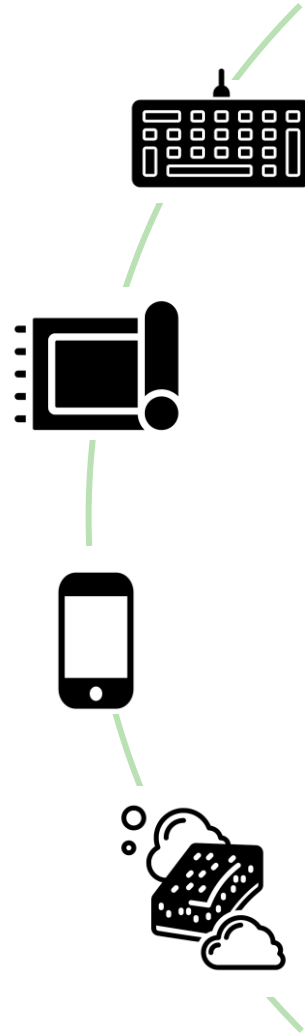
# Invisible Threats

**5X**  
Your keyboard

**4000x**  
Your Carpet

**500x**  
Your Cellphone



**200,000x**  
Your Kitchen Sponge







## Air Ducts

-  It is recommended to clean air ducts Twice a year.
-  The average cost per cleaning is **\$600**.





## CONTAMINATED AIR DUCTS

HVAC air ducts are a breeding ground for the **MOLD, BACTERIA & FUNGI** that get circulated through the air causing building-related illnesses.

\*Source: [HTTP://WWW.NCEMBT.ORG/DOWNLOADS/NEMI\\_NCEMBTSTRATEGICREPORT.PDF](http://www.ncembt.org/downloads/nemi_ncembtstrategicreport.pdf)

**Over 75%** of all indoor air quality issues are HVAC related.



# INVISIBLE THREATS

Who are you sleeping with?



- The average mattress is home to 5 to 10 Million dust mites.





# The World's First Automatic **Air**duct Cleaner!





# EcoProbiotic

— S Y S T E M S —



THE WORLD'S FIRST AIR, SURFACE & OBJECT PURIFIER!



\* NO PRESERVATIVES CHEMICALS

EPS – 365

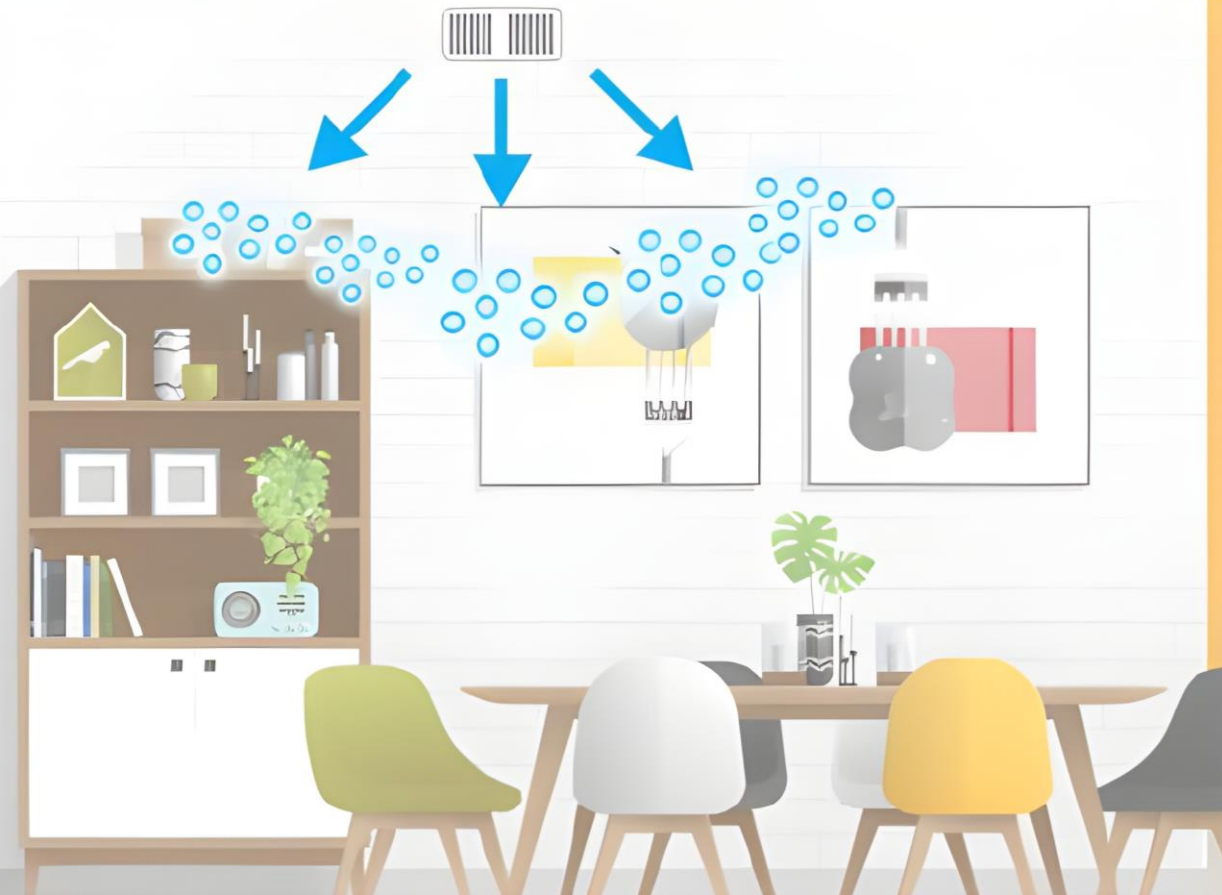
**Furnace**

***Air Handler***



**EPS-365**

**P R O B I O T I C S**



**TRILLIONS OF PROBIOTICS DISPERSED**



**EMSL Analytical, Inc.**

200 Route 130 North, Cinnaminson, NJ 08077  
 Phone/Fax: (800)220-3675 / (856)786-0262  
<http://www.EMSL.com> [cinnmicrolab@emsl.com](mailto:cinnmicrolab@emsl.com)

EMSL Order #: 371712112-COMP  
 Customer ID: FXAR42  
 Customer PO: CC-044214

Attn: EnergyBlue Ecotech  
 3112 Wyndham  
 Richardson, TX 75082

Phone: 469-224-7774  
 Fax: Not Available

Project: Energyblue

Date Collected: 4/02/17 - 6/02/17  
 Date Received: 4/20/17 - 6/15/17  
 Date Analyzed: 5/30/17 - 6/22/17

EMSL Sample #: 371708658-0001 - 0004 & 371712112-0001  
 Client ID: Bulk Allergens - BEFORE & AFTER 60days  
 Location: Living Room

Sample Type: Bulk  
 Sample Size: 114  
 Sample Units: mg

**Analytical Results -Indoor Allergen Analysis by MARIA®**

Sample ID	Test Parameter	Antigens	Detection Limits	Concentrations	Allergen Risk Levels
371708658-0001	Dust Mites Allergen	Der f1	0.012 µg/g	3.8 µg/g	⚠
371708658-0001	Dust Mites Allergen	Der p1	0.012 µg/g	4.6 µg/g	⚠
371708658-0002	Cat Allergen	Fel d1	0.004 µg/g	0.5 µg/g	✅
371708658-0003	Dog Allergen	Can f1	0.012 µg/g	10.5 µg/g	❌
371708658-0004	Cockroach Allergen	Bla g2	0.012 µg/g	0.6 µg/g	⚠

Sample ID	Test Parameter	Antigens	Detection Limits	Concentrations	Allergen Risk Levels
371712112-0001	Dust Mites Allergen	Der f1	0.012 µg/g	ND µg/g	✅
371712112-0001	Dust Mites Allergen	Der p1	0.012 µg/g	ND µg/g	✅
371712112-0002	Cat Allergen	Fel d1	0.004 µg/g	0.03 µg/g	✅
371712112-0003	Dog Allergen	Can f1	0.012 µg/g	1.38 µg/g	✅
371712112-0004	Cockroach Allergen	Bla g2	0.012 µg/g	ND µg/g	✅

† Sufficient evidence is not available for risk levels.

Allergen Risk Levels:

- ❌ High -Risk of acute asthmatic attack.  
 ⚠ Moderate -Risk for sensitization and bronchial hyperactivity.  
 ✅ Low -Not sufficient to cause symptoms or ND (None Detected); Indicates that the amount of allergen in the sample is below the detection limits.



EMSL ANALYTICAL, INC.

Before :

Concentrations	Allergen Risk Levels
3.8 µg/g	⚠
4.6 µg/g	⚠
0.5 µg/g	✅
10.5 µg/g	❌
0.6 µg/g	⚠

After :

Concentrations	Allergen Risk Levels
ND µg/g	✅
ND µg/g	✅
0.03 µg/g	✅
1.38 µg/g	✅
ND µg/g	✅



# EcoProbiotic

— S Y S T E M S —



Contact Us

# Get It Touch With US



**Location :**

3420 Atrium Blvd Suite 160,  
Middletown OH, 45005



**Number Phone :**

(833) 359-3536



**Email :**

help.homeenergypros@gmail.com

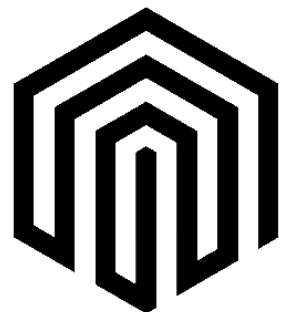


**Website :**

[www.homeenergypros.net](http://www.homeenergypros.net)







# Home Energy

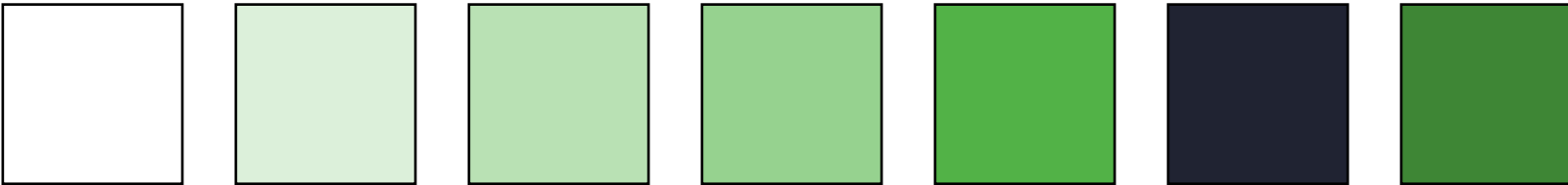
PROS

Thank You.



# Color Grading

*Theme :*



*Font :*

